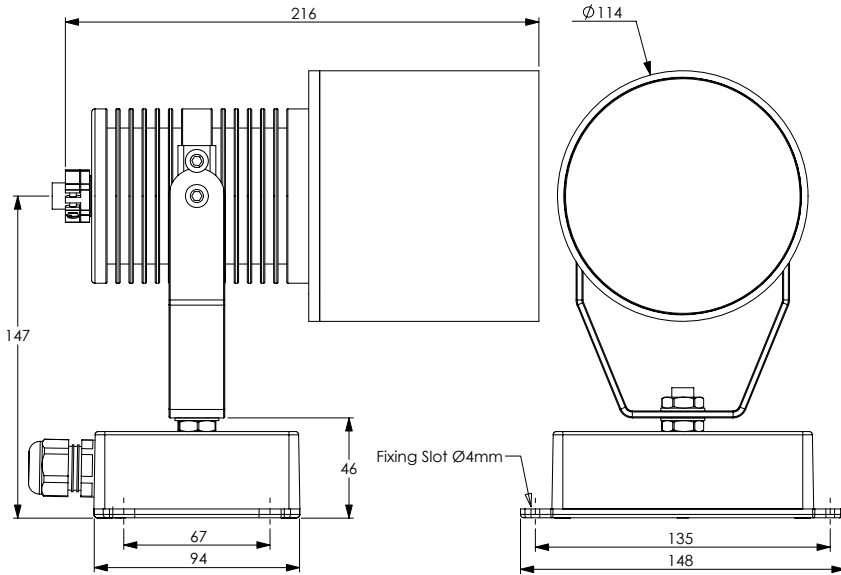


Specification Sheet 37720-0*

Issue Date: January 2008



Product Name:

Max Par30 35W Integral

Description:

Exterior 35W PAR30 CDM-R Box Integral Surface Mounted Spotlight

Part Number:

37720-0*

* = Finish Code

TECHNICAL DETAILS

Lamp: MRS/UB-35-H-E27-97/125

Lamp Holder: E27

Supply Voltage: 230/240V

Lamp Wattage: 35W Only

Fitting Weight: 2.75kg (excluding cable)

Glass Size: Ø100mm

Supplied Cable: 2.5m 2-Core 1mm² H07RN-F

Operating Temperature: -20 °C to 35 °C

Housing:

Anodised aluminium housing with a PTFE painted finish

Gear:

Complete with integral 35W CDM gear in a IP66 anodised aluminium housing with a PTFE painted finish.

NB Light fittings become hot during use - please exercise appropriate caution.



Sample Lamp Data for Philips 35W PAR30 CDM Lamps

Beam Detail	LP Code	Peak Illumination / Lux				AV Lamp Life / hours	Colour Temperature / °K
		1.0m	2.0m	3.0m	4.0m		
10° Spot	111-116	44,000	6,500	4,889	2,750	9,000	3,000
30° Flood	111-117	7,400	1,850	822	462	9,000	3,000

Please note that alternative beam angles may be available.

FINISHES AVAILABLE

White (RAL 9016)

Part Number 37720-01

Black (RAL 9011)

Part Number 37720-02

Specified BS/RAL

Part Number 37720-03 + BS/RAL No

FACTORY FITTED OPTIONS

Extra supply cable per m - state length 247-00821/*m

ACCESSORIES / SPARES

C Spring	248-0306
Colour Glass ◊	248-0310-***
(See sheet CG001)	
Spread Lens Ribbed ◊	248-0311
Colour Dichroic Glass	248-0315-***
(See sheet CDG001)	
Light Frost ◊	248-0316
Medium Frost ◊	248-0317
Heavy Frost ◊	248-0318
Half Shield Cowl	247-1527-*
Full Tube Cowl	247-1528-*
IP66 Connection Box	247-0080
Replacement Lampholder	247-0389

◊ Indicates C Spring is required

SPECIFICATION EXAMPLE

Max PAR30 35W Integral, Black Finish with extra 2m cable, Light Frost Lens and 35W 10° Lamp:

Fitting Code (with finish) + Option Code + Accessory Codes + Lamp Code

37720-02 + 247-00821/2m + 248-0306 + 248-0316 + 111-116

Lightscape Projects is a division of the Light Projects Group of companies, London. **Product Improvements** In pursuance of the Light Projects Group policy of continuing product improvement, the products and product specifications included in this publication are liable to be modified without notice. **Trademarks** Unless otherwise indicated, the trademarks and tradenames in this publication are registered, or unregistered, industrial property rights of Light Projects Limited. **Patents** The fitting in this publication may be covered by Patents, Patent Applications and/or Design Registrations. Designed to conform to BS-EN 60598. This specification sheet supersedes all previous. Please notify Light Projects Limited of any inaccuracies immediately. E&OE.

Light Projects 23 Jacob St London SE1 2BG Tel +44 (0)20 7231 8282 Fax +44 (0)20 7237 4342
Website www.lightprojects.co.uk Email info@lightprojects.co.uk