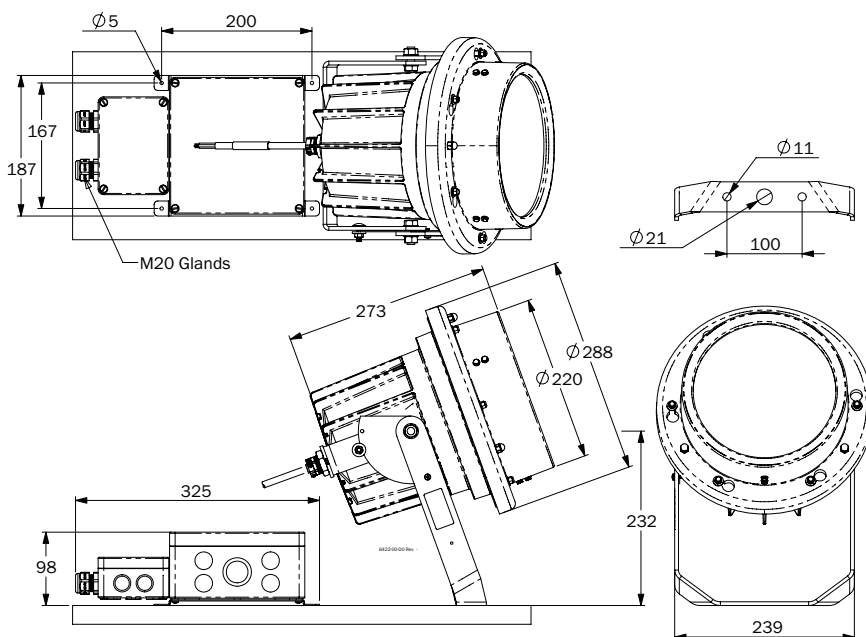


### Specification Sheet 6423-0\*

Issue Date: January 2006



**Product Name:**

Mission 2

**Description:**

Exterior PAR64 120V Surface Mounted Spotlight

**Part Number:**

6423-0\*

\* = Finish Code

**TECHNICAL DETAILS**

**Lamp:** HEGPAR-1000-120-GX16d-204

**Lamp Holder:** GX16d

**Supply Voltage:** 230/240V

**Lamp Voltage:** 120V

**Max Lamp Wattage:** 1000W

**Weight:** 6.5kg (excluding cable)

**Internal Glass Size:** Ø205mm

**External (Accessory) Glass Size:** Ø222.5mm

**Supplied Cable:** 3m 3-Core 1.5mm<sup>2</sup> reinforced Silicone

**Housing:**

Chromate treated aluminium with a PTFE painted finish

**Transformer:**

Requires a remote 230V-240V/120V supply / transformer

121-122 = 240/120V 1000VA IP66 Transformer

121-239 = 240/120V 500VA IP66 Transformer

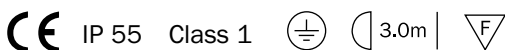
Exterior IP66 in fully potted polycarbonate box with input & output terminals with M20 Glands

**ACCESSORIES / SPARES**

Accessory Holder	247-0701-*
C Spring	247-0706
Eggcrate Louvre ◇	247-0723-2
Ground Spike Remote 200mm	247-0741-*
Ground Spike Remote 500mm	247-0742-*
Safety Wire	247-0750
IP66 Connection Box	247-0080

For glass lenses and filters please contact the factory

**NB** Light fittings become hot during use – please exercise appropriate caution.



**Sample Lamp Data for GE 120V 1000W PAR64 Lamps**

Beam Detail	LP Code	Peak Illumination / Lux				AV Lamp Life / hours	Colour Temperature / °K
		1.0m	2.0m	3.0m	4.0m		
1000W SP 15°x18°	105-151	200,000	50,000	22,220	12,500	4,000	2,800
1000W MFL 28°x12°	105-152	80,000	20,000	8,890	5,000	4,000	2,800
1000W WFL 48°x24°	105-153	33,000	8,250	3,670	2,065	4,000	2,800

Please note that alternative beam angles and lamp wattage may be available. Please refer to lamp specification sheet LS006 for more details.

**FINISHES AVAILABLE**

**White (RAL 9016)**  
Part Number 6423-0<sub>1</sub>

**Black (RAL 9011)**  
Part Number 6423-0<sub>2</sub>

**Specified BS/RAL**  
Part Number 6423-0<sub>3</sub> + BS/RAL No

**FACTORY FITTED OPTIONS**

Extension cable per m - state length 247-0086/\*\*m

**SPECIFICATION EXAMPLE**

Mission 2, Black Finish with extra 2m cable, Eggcrate Louvre and 120V 1000W SP Lamp:

Fitting Code (with finish) + Option Code + Accessory Codes + Lamp Code

**6423-02 + 247-0086/2m + 247-0706 + 247-0723-2 + 247-0701-2 + 105-151**

◇ Indicates Accessory Holder and C Spring is required

Lightscape Projects is a division of the Light Projects Group of companies, London. **Product Improvements** In pursuance of the Light Projects Group policy of continuing product improvement, the products and product specifications included in this publication are liable to be modified without notice. **Trademarks** Unless otherwise indicated, the trademarks and tradenames in this publication are registered, or unregistered, industrial property rights of Light Projects Limited. **Patents** The fitting in this publication may be covered by Patents, Patent Applications and/or Design Registrations. Designed to conform to BS EN 60598. This specification sheet supersedes all previous. Please notify Light Projects Limited of any inaccuracies immediately. E&OE.