

The latest news from LP  
New ranges for 2008  
News from our manufacturing partners

news | 2008

Light Projects Group <sup>LP</sup>



## Cover story

A stunning lighting scheme has recently been designed, supplied, installed and programmed by Lightscape Projects, part of the Light Projects Group.



The Richard Desmond Children's Eye Centre, designed by architects Penoyre & Prasad and which forms part of the Moorfields Eye Hospital, is illuminated on the south side using a linear combination of Light Projects and Tryka RGB Colour Changing LED Equipment. The lighting illuminates the façade by casting light on the underneath of the freely placed folded aluminium louvres. These are suspended on tensioned cables in front of the glass curtain walling to protect the building from solar gain.

The lights produce very accurate output with great sensitivity as they are placed in such a way to prevent glare for people looking out of the window. All the light and glare is reflected away from the building.

The lighting system is controlled by a DMX 512 controller – with a Light Projects' designed programme to create shifting light scenes using an imaginative mix of subtle colours – as a celebration of light and to create a living, breathing experience.

Light Projects' Roger Beckett comments, "This project demonstrates how the improving synergy between architects and lighting designers can work together to turn building facades into magical scenes." ■

# Light Projects website review

Light Projects has continued the development of its new website with the addition of new products, specification sheets and more detailed information on products, services and projects.

With content being regularly updated, it is fast becoming the first port of call for many of our specifiers who want instant access to our latest products.

The site also features an online query and information request facility to help facilitate easy communication.

[www.lightprojects.co.uk](http://www.lightprojects.co.uk)



## Who's new? Three new people have joined our team in the last few months.



Firstly we welcome **Denise Arthur** who has joined us as sales administrator. Formerly a branch manager for a care company and having worked for Mitsubishi, Denise will be helping to support the sales team, ensuring that enquiries are serviced quickly and efficiently and keeping them in order!

Also within the sales team comes **Stanley Wilson**. Stanley has worked around the world in the events side of lighting and also worked with

Light Projects in 1999 on the Stone Forest Project in China. Eight years later, he has joined Light Projects and takes responsibility for the decorative lighting side of the business, as well as bringing his events lighting expertise to our showroom.



We also welcome **Chris Parker** who has joined our team as an R&D Technician and works in our production facility. Chris joins us from Vanderlander having recently designed the new baggage system at Heathrow's Terminal 5!

We are always looking for pro-active and self-motivated individuals to join our busy sales teams. Visit our website at [www.lightprojects.co.uk](http://www.lightprojects.co.uk) for more details. ■



## Light show

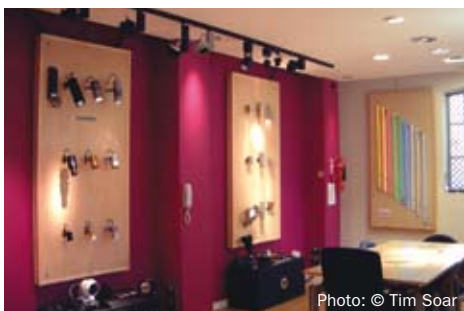


Photo: © Tim Soar

Our showrooms in SE1 have been developed and upgraded throughout the year to show the latest products we have on offer.

The showrooms comprise two distinct areas. The architectural and display lighting section of the showroom includes fittings from our own ranges and those from our manufacturing partners.

The decorative lighting section showcases the latest interior lighting for residential and commercial applications, with a strong emphasis on cutting edge design. ■

## Reader competition



Over the last couple of months, many of our readers will have had our little bendy friend land on their desk.

We are offering two prizes. One for the most innovative name for our little friend and the second for the best photograph you can send us which includes him in the image!

### If you haven't received our bendy friend...

...and would like one, please email us at [lucy@lightprojects.co.uk](mailto:lucy@lightprojects.co.uk) and we will be delighted to send one to you\*. Entries for the name and photo are to be sent to the same address no later than 30th December 2008. ■

(\*subject to availability)

# NEWS from our manufacturing partners

**Intralux**

**Intralux's** Cog T5 is an exterior weatherproof lighting system for linear applications which accepts the complete, efficient range of T5 lamps as well as the high output variants. Manufactured from aluminium with a polycarbonate lens, this IP65 rated fixture is extremely compact and fully integrated and is ideal for effectively lighting any special building or landscape feature, on a modular basis.

The durable Cog T5 offers long life quality performance, with minimum life cycle costs and low maintenance requirements.

Ideal for providing lighting to landscape projects, the Cog T5 is also perfect for monuments, garden features, heritage projects, building delineation, facades, balustrades, parapets and even signage. The Cog forms part of the innovative range of lighting available from **Intralux**. This includes the renowned Kove series specifically designed to create indirect, shadow-free illuminations; the Slite range for close proximity illumination; the Frame for high-ceiling applications; and the Versatile for undershelf, suspended and wall mounted decorative lighting applications. ■

[www.intralux.com](http://www.intralux.com)



Photo: © Chris Burridge

## Roblon

[www.roblon.com](http://www.roblon.com)

Danish fibre optic manufacturer **Roblon** has had a busy year.

The company has launched a new corporate identity and has released a raft of new products using the latest in fibre optic lighting technology. Amongst the launches are the BeeBop, Avant Garde and Beespot products.

The fibre optics have also recently been used to form a stunning effect at the O2 in London. Designed by Cory Berhost, M E Engineers, fibre optics were used throughout the Indigo VIP Lounge to enhance the unique space. The centrepiece is a stunning three-metre diameter 'grass-skirt' chandelier consisting of 4,000 no. metre long cracked side-glow glass fibres powered by 9 x 150 Watt projectors controlled on a dimmable, colour change DMX programme.

In addition, five low voltage projectors are used to power 200 individual light points in frost glass fittings in the seating areas. ■



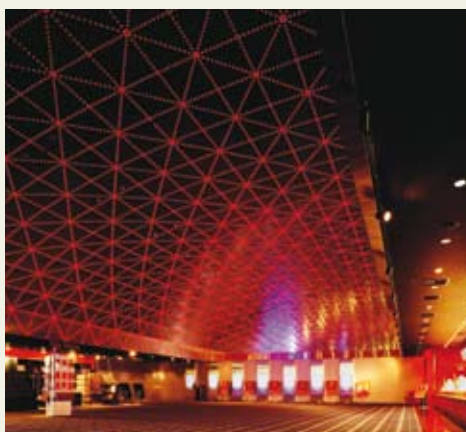
Among the new launches from **KIM Lighting** is the innovative WARP9™ Roadway luminaire.

This highly designed and stylised luminaire breaks away from the trend of traditional lighting where luminaires are often embellished, decorated and adorned – often beyond the design concept. The Warp9 is designed to 'disappear' from the site and to camouflage itself within its surroundings to minimise visual detection and to be as unobtrusive as possible.

The WARP9 employs an efficient and low profile compound curve design that results in a close synergy between aerodynamic performance, illumination performance and limited cross-section visibility.

When installed with the right scale, finish and placement, it achieves a unique level of concealment and subtle presence never before offered in an architectural luminaire. It is available in two housing sizes in electronic or magnetic ballasted versions which are available with four distinct light distribution patterns in wide variety of mounting and fixture finishes. ■

[www.kimlighting.com](http://www.kimlighting.com)



[www.tokistar.com](http://www.tokistar.com)

In a demand for lighting efficiency, **Tokistar Lighting Systems** has responded by incorporating LEDs into all of their product lines to complement the current incandescent ranges of cable lights, tape lights, linear lighting extrusions and lightstrings. For example, TokiLED and P4 LEDs are two new ultra-bright LED sources added to the range.

TokiLED is designed for direct viewing and can be used with the existing FL Series of Lightstrings, the Exhibitor traditional festoon lighting system and the cable lighting systems. TokiLEDs reflect light in all directions making it perfect for full-range viewing with excellent colour consistency, whilst the P4 LEDs give a broad 100° viewing angle. Many colours are available including amber, blue, green, magenta and four white colour temperatures, including a 3000° Kelvin which emulates incandescent perfectly. The new systems reduce energy costs by up to 95%, whilst dramatically increasing the maximum achievable length of runs – all the while using fewer transformers. ■





LUMASCAPE

**LumascapE** has extended its LS363 range of inground uplighters with the addition of a new 20W CDM-TM Metal Halide Version. In addition, the company has also launched a new range of LED lighting fittings to complement its globally recognised range of discharge and incandescent uplighters and accent lights. Using the K2 series LEDs from Luxeon, high efficacy and long life are now combined for serious performance.

The new range comprises in ground uplighters as well as accent lights, underwater and wall-mounted variants. With low maintenance and up to 50,000 hour life, the new LED ranges are perfect for energy and environmentally-sensitive projects.

The LED fittings are available in white, warm white and blue as well as RGB inground uplighter. All the fittings are manufactured from marine grade stainless steel, brass or aluminium in a range of finishes and include up to a comprehensive 10-year mechanical guarantee. This exciting new collection now gives architects and specifiers the opportunity to use **LumascapE's** high performance, highly engineered products with the added advantages of the new LED light sources. ■



[www.lumascapE.com](http://www.lumascapE.com)



Plexineon

[www.ilight-tech.com](http://www.ilight-tech.com)

**Plexineon**, the unique solid plastic linear LED system, has been installed to dramatic effect in the new Wimbledon Lawn Tennis Museum at the All England Lawn Tennis Club.

Designed by Mather and Company, with DHA Designs lighting consultants, the **Plexineon** forms a circle under the glass floor to highlight the interactive exhibits. **Plexineon** is unique because it comprises a solid plastic waveguide with the LEDs encapsulated within.

With an IP rating of IP66, **Plexineon** is highly water-resistant. It is available in six vibrant colours – blue, teal, green, amber, orange and red – as well as three temperatures of white. In addition, the fitting is far more resilient than traditional neon, being extremely durable and shatterproof. It also runs at a very cool temperature allowing it to be sited near flammable materials or within touching range. ■



**Tecnolight** has extended its collection of lighting systems with the launch of the new interior DA4 range.

This unique range of circular luminaires can be suspended, surface mounted or wall mounted and is available in different diameters and combinations of lamp sources. The DA directs light through its opal diffuser as well as indirect light against the ceiling or wall substrate, crowning the unit in a halo of light. It is also possible to have a central LV or spot to complement the Halo.

The DA range is manufactured from aluminium in RAL 9006 and comes complete with electronic ballast for T5 circular lamps.

In addition to its extensive range of recessed, semi-recessed and surface mounted downlights, **Tecnolight** also offers mirror lighting systems which use the latest in lamp source technology. ■



[www.tecnolight.de](http://www.tecnolight.de)



Fineline

[www.fineline.uk.com](http://www.fineline.uk.com)

**Fineline** manufactures the spectacular Diablo 7KW Xenon Searchlight which features an adjustable (sub 1° to 4°). When programmed it can produce an awe-inspiring light choreography within the night sky. ■



**Francis** has developed its range of LH searchlights with the addition of a Metal Halide 575 Watt version. The 575W MH axial-mounted fixture features a 3,000 hour lamp life and projects an accurate beam of light up to one mile. ■



[www.francis.co.uk](http://www.francis.co.uk)